

MONTANA STATE UNIVERSITY

STADIUM SELF CHECK IN TRAILER BUILDING RELOCATION (PERMANENT ELECTRICAL SERVICE)

BOZEMAN, MONTANA

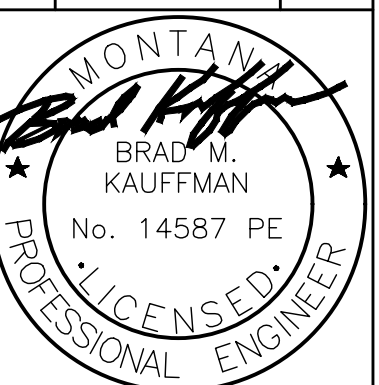


MSU-CPDC
MONTANA STATE UNIVERSITY
BOZEMAN, MONTANA
PHONE: 406.994.5413
FAX: 406.994.5665

STADIUM
SELF CHECK IN TRAILER
BUILDING RELOCATION
(PERMANENT ELECTRICAL SERVICE)



DRAWN BY:		
REVIEWED BY:		
REV.	DESCRIPTION	DATE



PPA#21-0139

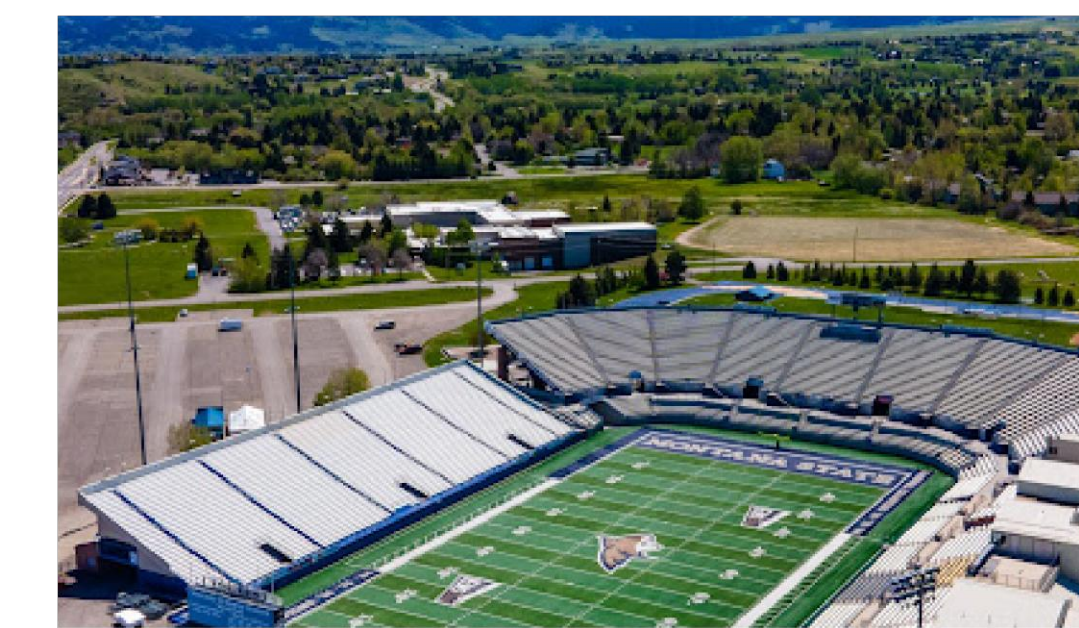
A/E#00-00-00

GPD#22-2510

SHEET TITLE
COVER SHEET

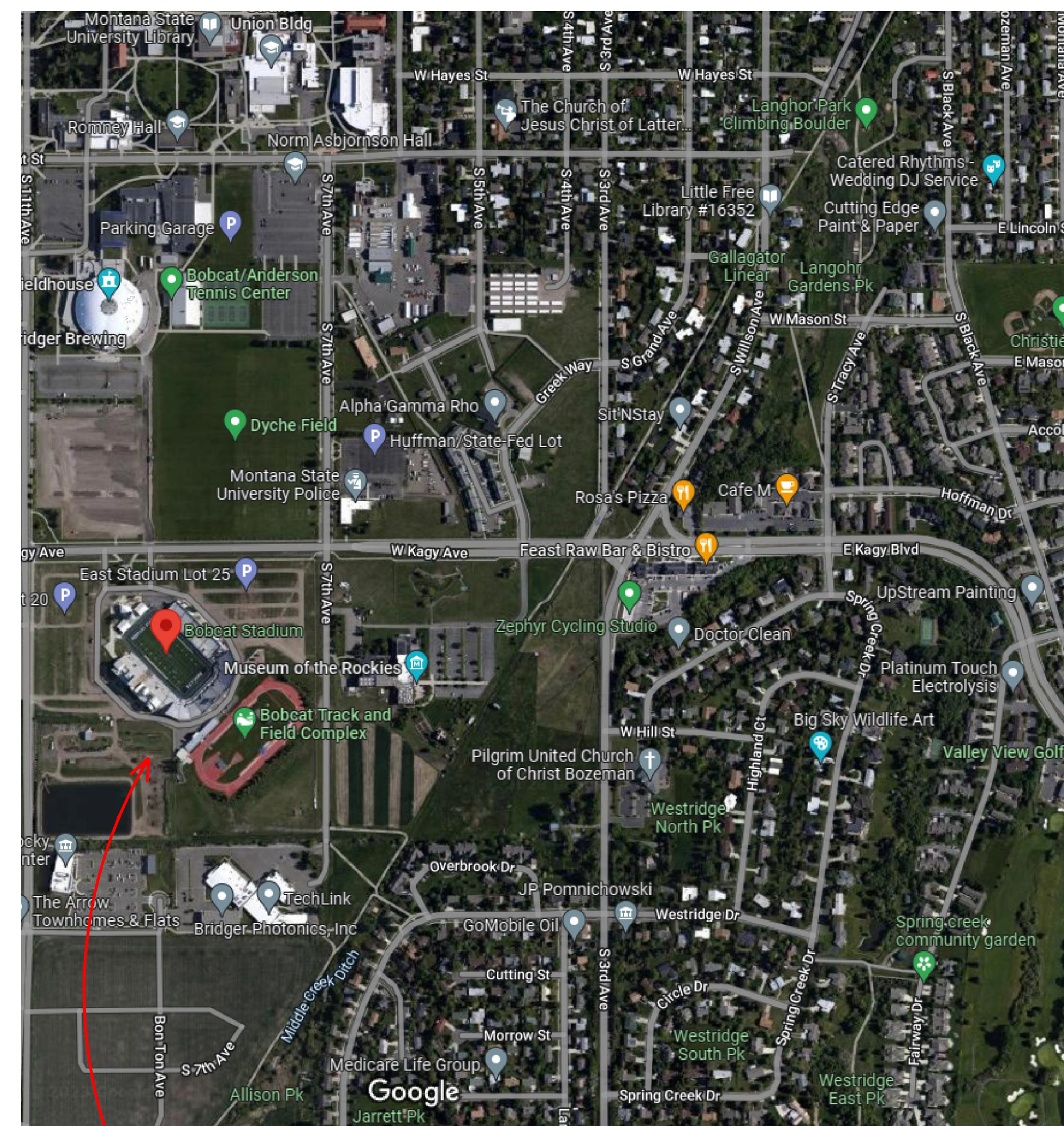
SHEET
G1.0

DATE
02-21-23



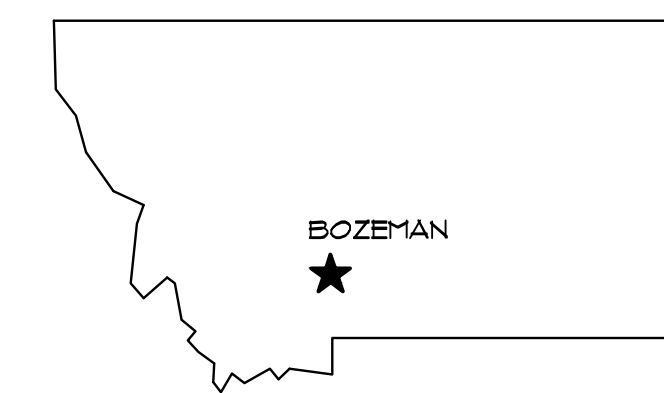
PROJECT LOCATION

BOZEMAN AREA MAP



PROJECT LOCATION

MONTANA MAP



OWNER
Montana State University - Bozeman
University Facilities Management
PO Box 172160
Bozeman, MT 59717-2160
phone 406-994-2001

ENGINEER
GPD PC
524 1st Avenue South
Great Falls, MT 59401
phone 406-452-4550
Brad Kauffman, PE

PROJECT ADDRESS
MONTANA STATE UNIVERSITY
BOBCAT STADIUM
1 BOBCAT CIRCLE
BOZEMAN, MONTANA 59718

DRAWING INDEX

GENERAL

G1.0 COVER SHEET

ELECTRICAL

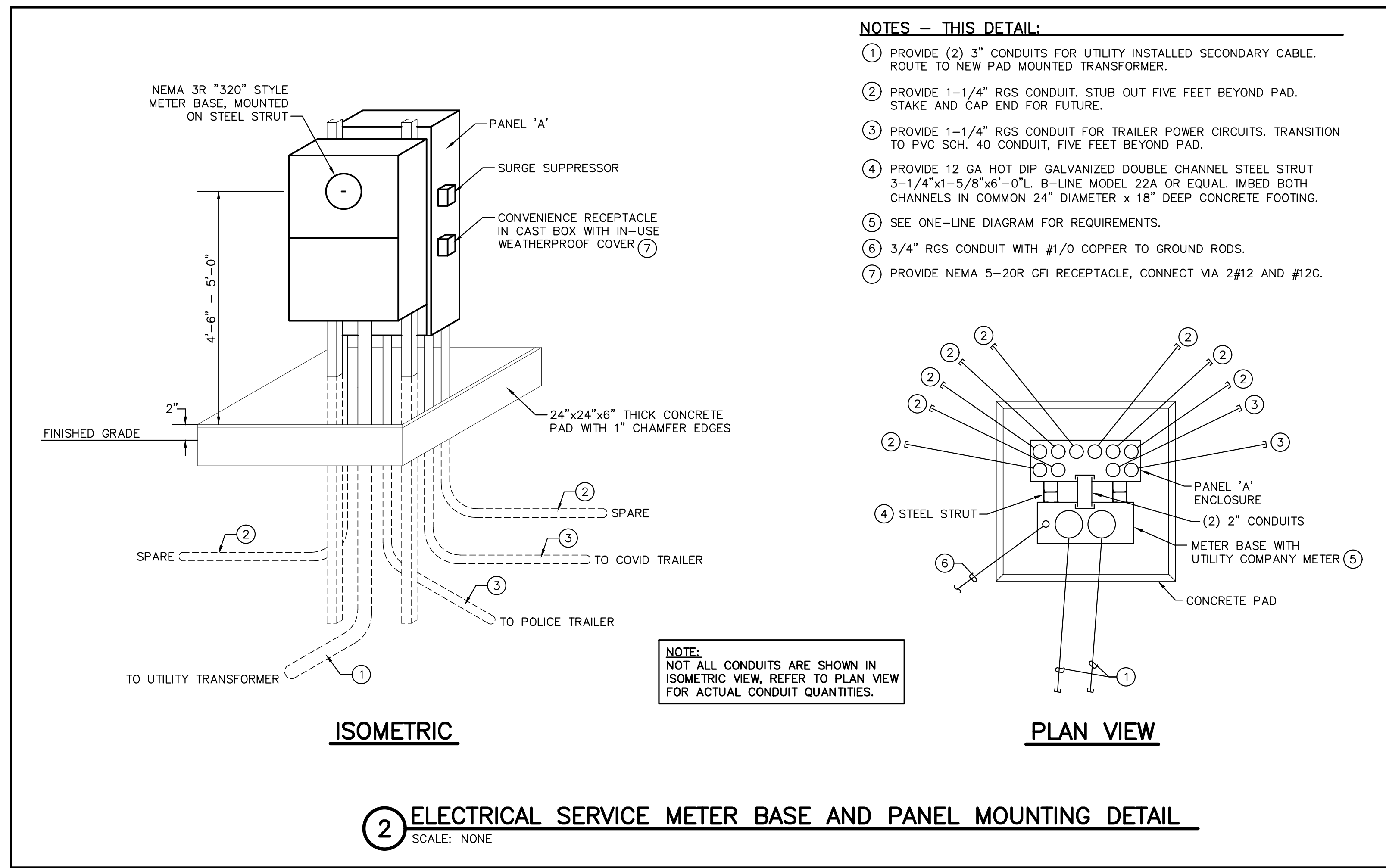
E1.0 ELECTRICAL SCHEDULES AND SITE PLAN
E2.0 ELECTRICAL DIAGRAMS AND ENLARGED PLAN

PROJECT SCOPE OF WORK

THIS PROJECT IS FOR THE INSTALLATION OF A NEW ELECTRICAL UTILITY SERVICE TO SERVE TWO EXISTING TRAILERS LOCATED JUST OUTSIDE OF BOBCAT STADIUM. NORTHWESTERN ENERGY HAS ALREADY BEEN CONTRACTED BY THE UNIVERSITY TO INSTALL THE ELECTRICAL PRIMARY, PAD MOUNT TRANSFORMER, AND SECONDARY UP TO A NEW METER BASE. THE NEW ELECTRICAL PANEL, METER BASE, AND SURGE SUPPRESSOR WILL BE FURNISHED BY THE UNIVERSITY AND INSTALLED BY THE CONTRACTOR. REFER TO THE PROJECT MANUAL FOR REQUIRED COMPLETION DATE.

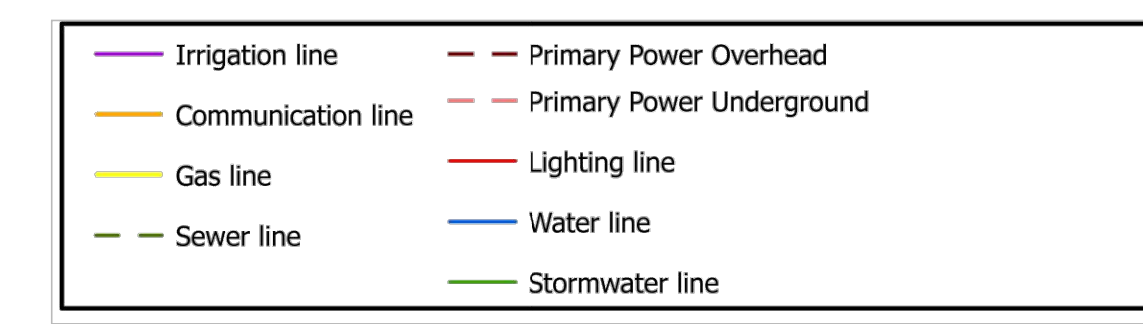
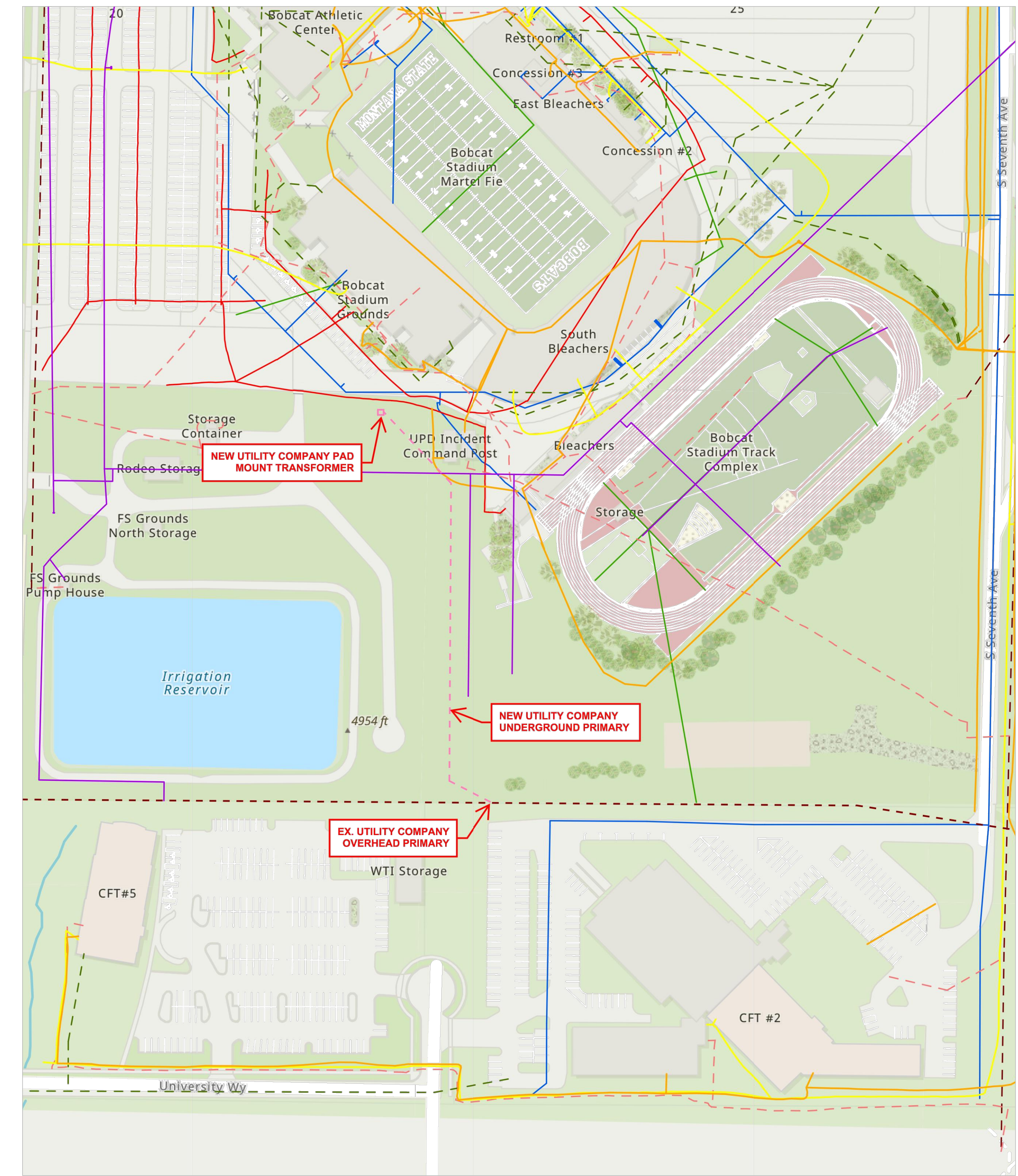
APPLICABLE BUILDING CODES

2020 NATIONAL ELECTRICAL CODE (NEC)



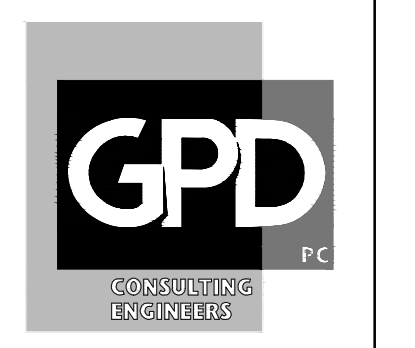
PANELBOARD SCHEDULE (OFCI)					
PANEL: A		MAIN BREAKER: 400 AMP		MOUNTING: SURFACE	
CHARACTERISTICS: 120/240 VOLT, 1Ø, 3WIRE		FEEDERS: SEE ONE-LINE DIAGRAM		FEED LOCATION: BOTTOM	
MINIMUM AIC: 22 KAMPS		MAIN BUS: 400 AMP		MISCELLANEOUS: SQUARE D 'NQ' PANELBOARD IN NEMA 3R ENCLOSURE. OWNER FURNISHED, CONTRACTOR INSTALLED (OFCI)	
WIRE SIZE	LOAD DESCRIPTION	CIRCUIT BREAKER #	WIRE SIZE	CIRCUIT BREAKER #	LOAD DESCRIPTION
#2	POLICE TRAILER	100A-2P	1	2	100A-2P
#2	SPORTS FACILITIES HQ TRAILER	100A-2P	3	4	SPARE
#2	SPARE	100A-2P	5	6	100A-2P
#2	SPARE	60A-2P	7	8	SPARE
#2	SPARE	60A-2P	9	10	60A-2P
#2	SPARE	30A-2P	11	12	SPARE
#2	SPARE	30A-2P	13	14	30A-2P
#2	SPARE	20A-2P	15	16	SPARE
#12	SURGE SUPPRESSOR	20A-2P	17	18	20A-1P
#12	SPARE	20A-1P	19	20	20A-1P
#12	SPARE	20A-1P	21	22	20A-1P
#12	SPARE	20A-1P	23	24	20A-1P
#12	PROVISION		25	26	PROVISION
#12	PROVISION		27	28	PROVISION
#12	PROVISION		29	30	PROVISION

ELECTRICAL LEGEND & ABBREVIATIONS	
SYMBOL	DESCRIPTION
\$	SWITCH
⊕	UTILITY METER
⊕	POWER PANEL - 120/240 VOLT, 1Ø 3 WIRE
⊕	DISCONNECT SWITCH
⊕	POLE MOUNTED LIGHT FIXTURE
⊕	DUPLEX CONVENIENCE RECEPTACLE
⊕	SPECIAL EQUIPMENT CONNECTION OR OUTLET AS NOTED
⊕	JUNCTION BOX OR J-BOX
ABBREVIATIONS	DESCRIPTION
AFF	ABOVE FINISHED FLOOR
AIC	AMPS INTERRUPTING CURRENT
BFG	BELOW FINISHED GRADE
C	CONDUIT
EC	ELECTRICAL CONTRACTOR
EX	EXISTING
GC	GENERAL CONTRACTOR
GRD	GROUND
GFI	GROUND FAULT CIRCUIT INTERRUPTER
HOA	HAND-OFF-AUTOMATIC
MCC	MOTOR CONTROL CENTER
OFCI	OWNER FURNISHED, CONTRACTOR INSTALLED
TEL	TELEPHONE
TFX, XFMR	TRANSFORMER
WP	WEATHER PROOF
W\	WITH

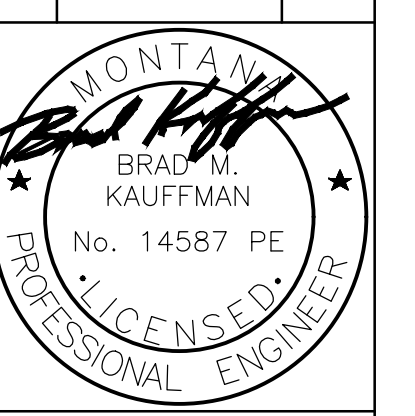


MSU-CPDC
MONTANA STATE UNIVERSITY
BOZEMAN, MONTANA
PHONE: 406.994.5413
FAX: 406.994.5665

STADIUM
SELF CHECK IN TRAILER
BUILDING RELOCATION
(PERMANENT ELECTRICAL SERVICE)



DRAWN BY:
REVIEWED BY:
REV. DESCRIPTION DATE



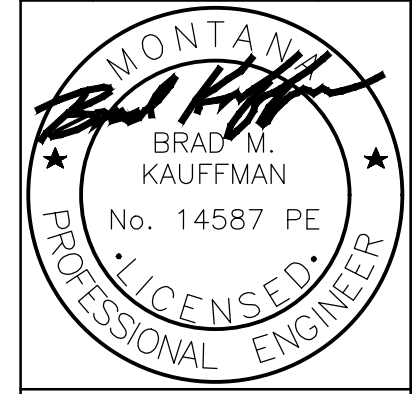
PPA#21-0139
A/E#00-00-00
GPD#22-2510

SHEET TITLE
ELECTRICAL SCHEDULES
AND SITE PLAN

SHEET
E1.0

DATE
02-21-23

DRAWN BY:		
REVIEWED BY:		
REV.	DESCRIPTION	DATE



PPA#21-0139

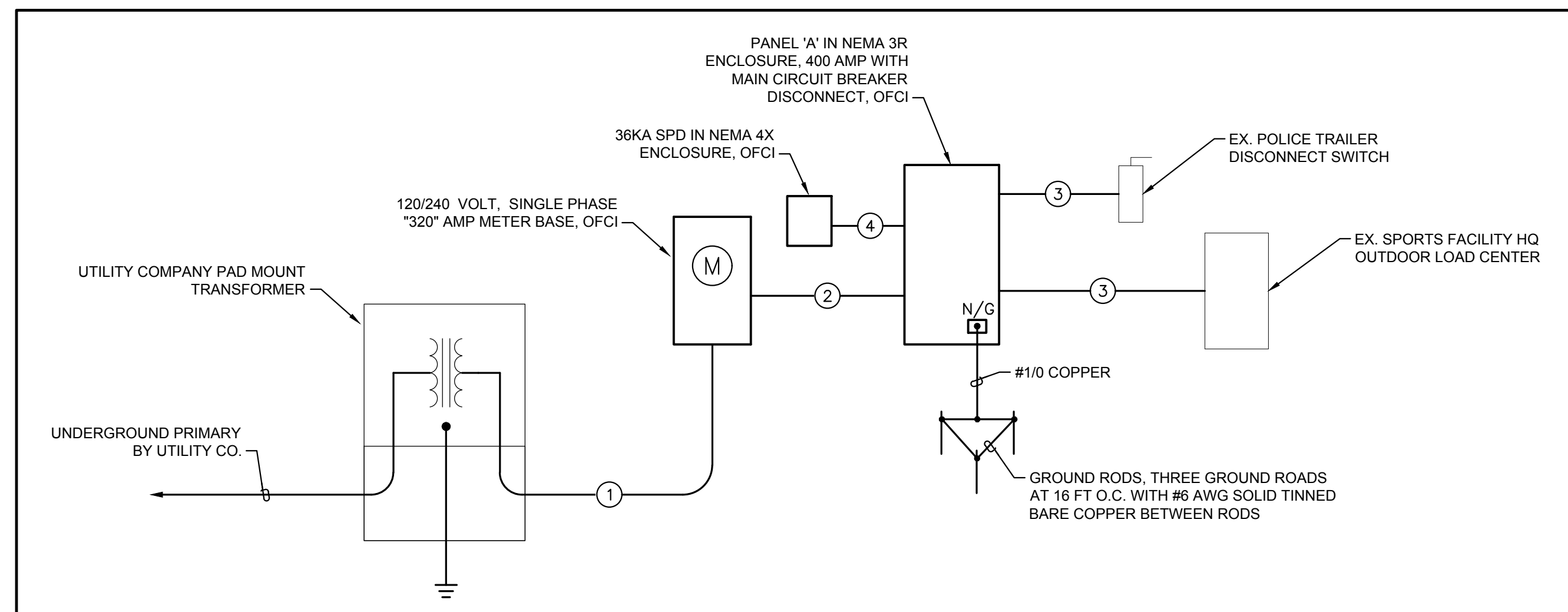
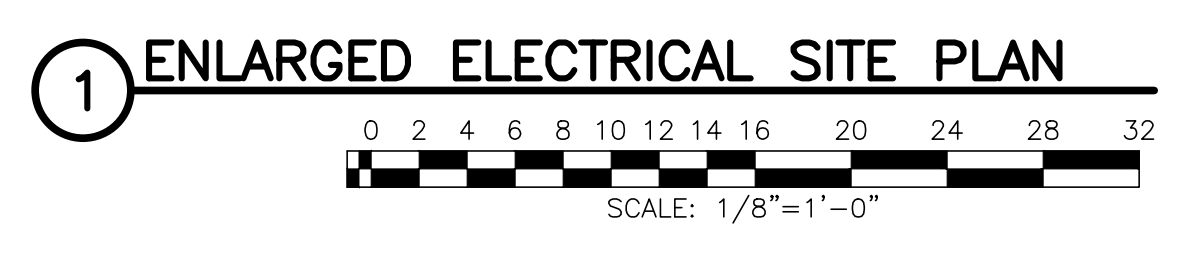
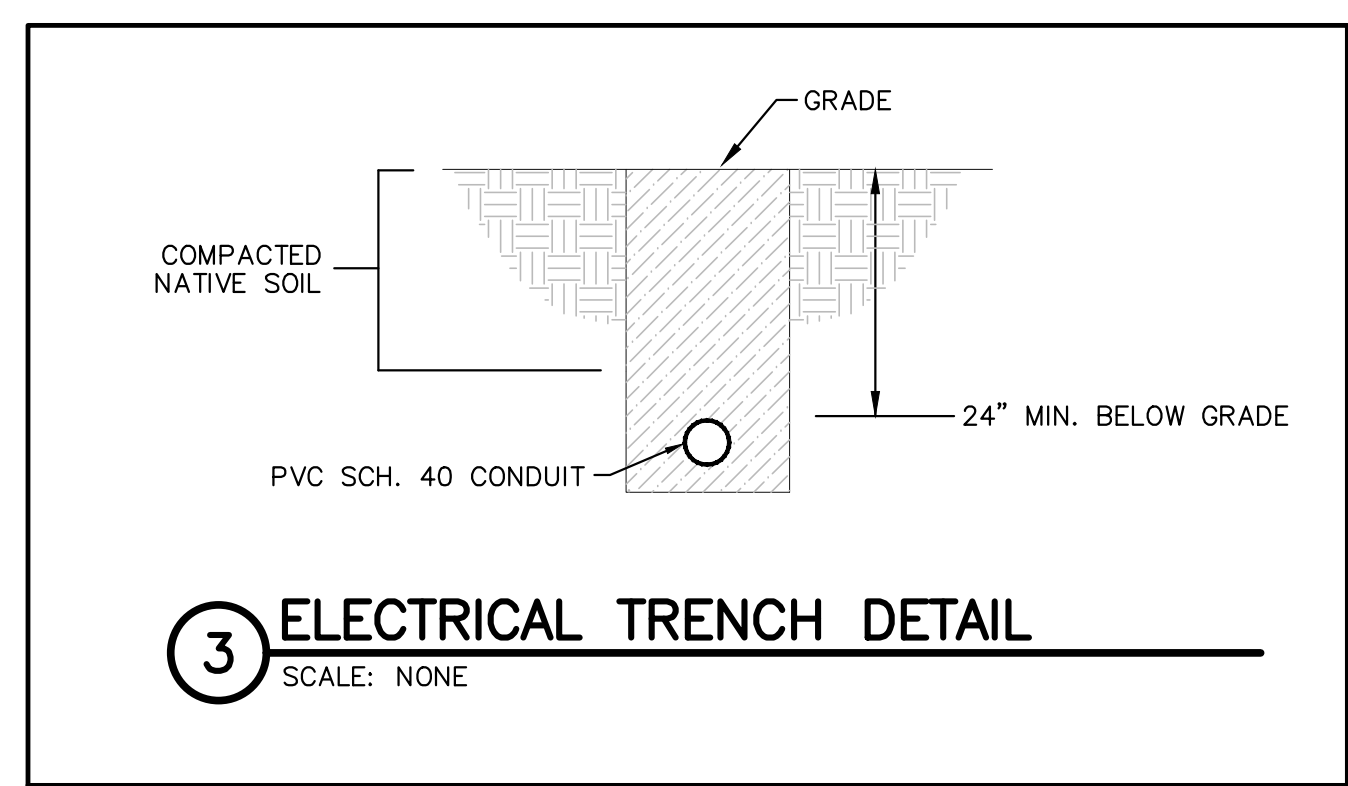
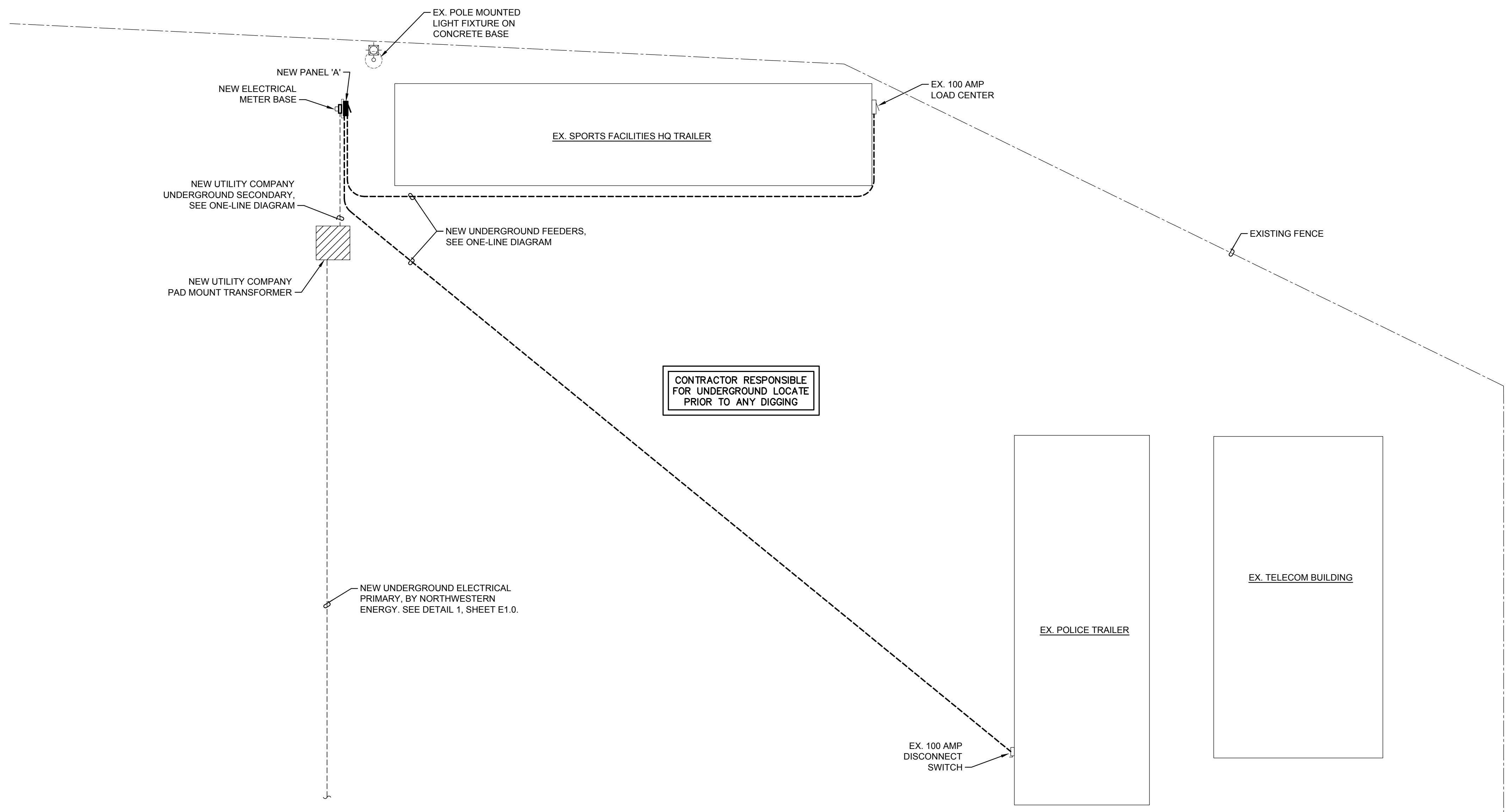
A/E#00-00-00

GPD#22-2510

SHEET TITLE
 ELECTRICAL DIAGRAMS
 AND ENLARGED PLAN

SHEET
E2.0

DATE
 02-21-23



- FEEDER SCHEDULE (COPPER/THHN):**
- ① (2) 3" CONDUITS, CONDUCTORS BY NORTHWESTERN ENERGY. COORDINATE PRIOR TO INSTALLATION.
 - ② (2) 2" CONDUITS, WITH 3#3/0 AND #3 GROUND IN EACH.
 - ③ 1-1/4" CONDUIT WITH 3#2 AND #8 GROUND.
 - ④ CONNECT FACTORY SPD LEADS DIRECTLY TO BRANCH CIRCUIT BREAKER.

2 ELECTRICAL ONE-LINE DIAGRAM
 SCALE: NONE

- GENERAL PROJECT NOTES:**
- A. CONTRACTOR IS RESPONSIBLE FOR ALL WORK TO COMPLETE PROJECT, INCLUDING, BUT NOT LIMITED TO: PERMITS, ELECTRICAL WORK, EARTHWORK, CONCRETE, AND PATCHING/PAINTING AS REQUIRED.
 - B. INSTALLATION OF ALL ELECTRICAL EQUIPMENT TO BE IN ACCORD WITH THE NATIONAL ELECTRICAL CODE AND OTHER APPLICABLE LOCAL CODES. THE CONTRACTOR SHALL OBTAIN ALL PERMITS REQUIRED FOR THIS PROJECT.
 - C. ALL ELECTRICAL SERVICE INTERRUPTIONS SHALL BE COORDINATED WITH THE OWNER AND ENGINEER 2 WEEKS PRIOR TO OUTAGE. REFER TO PROJECT MANUAL FOR REQUIRED COMPLETION DATE.
 - D. METER BASE, SURGE SUPPRESSOR, AND PANELBOARD ARE OWNER FURNISHED/CONTRACTOR INSTALLED. CONTRACTOR SHALL PROVIDE MEANS FOR MOVING ALL EQUIPMENT FROM MSU CAMPUS STORES TO SITE.