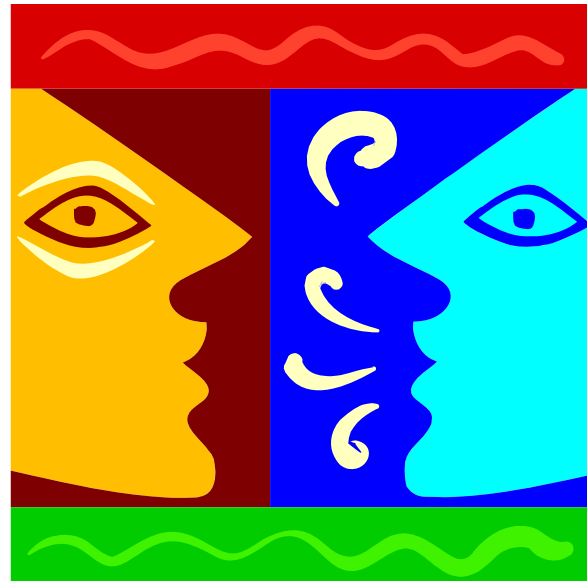


---

## Freshmen Retention at MSU: *Let's Hear Their Voices II*

---

**W**hy do freshmen stay at MSU—and why do they leave? Join us for a lively interactive question and answer session, the second in a series of student panel dialogues. A diverse group of second-semester freshmen from various MSU colleges will share their opinions on this important decision.



moderated by

**Dr. Waded Cruzado**  
**President, Montana State University**

Looking for someone to work with you individually on teaching?

The Teaching Help Desk has faculty who are available for consultation on various topics such as course design, test development, grading strategies, and more. Contact Chas Pinkava at [tlc@montana.edu](mailto:tlc@montana.edu) or 994-5572.

**Thursday, April 15, 2010**

Room 235 SUB

Lunch served: 12:00 noon

Discussion: 12:15-1:15 p.m.

Please RSVP to [annea@montana.edu](mailto:annea@montana.edu)  
by Tuesday, April 13, 2010

**Please note:** Due to the format of the workshop, the number of participants will be limited to 48. However, the session will be videotaped and posted on the [Teaching & Learning website](#) for later viewing.

This workshop is worth 1 unit toward the Certificate of Teaching Enhancement.

[Click here for more information.](#)